



POLISH PRODUCT



Manufacturer of curtain rods and maskings made of brass, stainless steel and aluminum

[www.karnisz.pl](http://www.karnisz.pl)



# Techno 30

with electric drive



POINT  
BENDING



ARC  
BENDING



WAVE  
SYSTEM



SMART HOME  
SYSTEM



inox



antico



white



black

**ZEGAR** introduces two brand new solutions of **Techno 30** curtain rods with a quiet, functional electric drive (finishes: **antico**, **inox**, **white**, **black**) and white **ZE** rail. The **ELECTRA** electrical drives combine modern design with a classic curtain rod. **ELECTRA** features practical solutions, like light touch function - pull the curtain slightly about 15 cm, curtain will open/close automatically, or intelligent start - stop function - set the curtain in the open/close position.

Modern **ELECTRA** system offered by **ZEGAR** can also be an important part of popular smarthome systems. **ELECTRA** system can be operated by a touch remote (white or black), a programmable wall panel with a digital display that allows setting open and close hours.



POLISH  
PRODUCT



# ZE

with electric drive



POINT  
BENDING



ARC  
BENDING



WAVE  
SYSTEM



SMART HOME  
SYSTEM



white

Electric curtain is recommended with rail channels and **MODERN 60** or **MODERN 80** decorative masking frame.

### Functions:

- Various possibilities of motor control – wireless remote control, wired control, relay control or by the shutter switch
- stop function - motor stops automatically to protect the whole system when if resistance is detected
- light touch function - pull the curtain slightly about 15 cm, curtain will open/close automatically
- manual operation - when the power is off, you can open or close the curtains manually
- the possibility to stop the curtain movement at the right time in order to optimize the light in the room





# TECHNO

brass, stainless steel



A professional single or double curtain rod with a cord system allowing a remote control of curtain movement (from the left or right side of the window).

Modern, simple shape curtain rods, made of brass or stainless steel; rings are equipped with a filler to enable more smooth and quiet move on the rod. You can use a rail instead of a rod, and move curtains on the entire length of the rail (also under brackets). Owing to the fact that diverse rod diameters can be used, the product is a good fit for small, medium and large windows. Finishes: **brass-antico, satin, stainless steel - inox mat** and **inox polished**. Used rods:  $\varnothing$  30, 20, 16, 12 mm and rails: 30 and 20 mm. Curtain rails can feature a **wave system** and **cord system**.





# TECHNO

brass, stainless steel



**Techno 20** and **30** curtain rods, and **MODERN 40**, available in **white** and **black**. Finals, brackets and rosettes can be embellished with *Swarovski Elements*, glass and ceramics.



# MODERN 40, 60

stainless steel, aluminum



Modern, simple shape curtain rods, made of stainless steel and aluminium. The profile width of 40 or 60 mm can be used as a single or double curtain rod - combined with a rail or rod. A unique bracket installation (behind the profile) allows a smooth move of the curtain on the entire length of the curtain rod. Finals can be embellished with *Swarovski Elements*. The curtain rod can be installed on a wall or ceiling. Finishes: **stainless steel - inox mat** or **polished** and **white**, and **black**. Curtain rails can feature a wave system that allows a fold drapery effect.





**MODERN** curtain rods were awarded  
**Home Décor 2009 Gold Medal**  
at Poznań International Fair  
and **Trend Design 2010 Award**  
at Łódź International Fair



inox

white

black

# MODERN 80

---

stainless steel, aluminum



Modern and simple - curtain rods made of stainless steel and aluminum. The 80 mm width profile can be used as a single or double curtain rod combined with rail. A unique profile shape enables customization depending on the interior by filling the front panel with a selected material. The brackets are attached to the profile, and they do not limit curtain movement on the entire length of the rod. Thanks to the width, it perfectly masks roller blinds or different rail systems. Finals can be embellished with *Swarovski Element*. The curtain rod can be installed on a wall or ceiling. Finishes: **stainless steel - inox mat, white, black**.



# HIGH-CLASS ROLLER BLINDS MASKING

---



Many windows are decorated with Roman blinds or roller blinds. To face the challenges of the market, **ZEGAR** introduces a brand new masking. The masking offered by **ZEGAR** can be used for roman blinds or roller blinds, and can be installed on a wall or ceiling by using universal brackets. The blinds greatly enhance visual qualities and make the decoration complete. Additionally, the profile of the masking can be used to hang curtains.

Masking made of **MODERN 60** or **MODERN 80** profiles are precisely cut at the angle and fixed permanently. It is suitable for covering both Roman and roller blinds, or the electric rod.





# FIXING BLINDS TO CURTAIN RODS

---

Due to a large number of window decorations with roman blinds, it became necessary to connect the curtain rod with the blind.

To meet the expectations, we have created a special system that allows the assembly of blinds to the rails of **TECHNO 20** and **MODERN 40** or **MODERN 60**. It can be used with single curtain rod (it makes the roller look more elegant) and with double curtain rod, where we use for example additional curtains. This solution allows us to mount several blinds next to each other on the rail, as well as very easy, quickly and cost-effectively change the decoration from the blinds to a classic curtain mounted to the **TECHNO 20** or **MODERN 40** or **MODERN 60** rail. The curtain rod can be mounted by sliding the bracket to the profile, locking it in place, and then screwing on any Roman blind bracket.

## Advantages of fixing blinds to curtain rods

- Blinds look more elegant
- Easy change the decoration from blinds to for example traditional curtain (we take off the roller blind and put on a curtain)
- We can mount more than one blind on the rail
- We can mount blinds anywhere
- We can freely move blinds from the wall when mounting to double curtain rods
- There is no need to drill additional holes in the wall
- We can hang the curtain rod lower than with the separate assembly of blinds and curtain rod





# Classic brass



The rods are characterized by classic design and are made of a high quality brass. This group wide variety of elements numerous brackets and finals (for example combined with glass, ceramics or decorated with *Swarovski Elements*), as well as quiet-running rings. They can be freely put together with ART DECO line elements. Available as: **brass - polished, antico, satin**. Used rods: Ø30 and 20 mm.



# ART DECO

---

## brass



Brass curtain rods refer in their style to ART DECO. Classic and simple at the same time. Apart from rods, rails are also used to enable the move of fabric on the entire length of rail, irrespective of the number of brackets. Rich selection of finials (for example brass combined with glass, ceramics), brackets, clips and silent-running rings. They can be freely put together with *Classic* line elements. Available as: **antico brass** and **satin**. Used rods: Ø30 and 20 mm, rails Ø20 mm.



# QUADRO

brass, stainless steel



inox



antico



satin



ANGLUAR  
JOINT

Brass and stainless steel curtain rod, inspired by geometry. Square rod, matched brackets, modern and simple shape, made of brass and stainless steel, perfect for modern interiors. Rich selection of finals – for example decorated with **SWAROVSKI ELEMENTS**, brackets, clips, as well as silent – running rings. Available as: **brass - antico**, **satin** and **stainless steel - inox**. Used profiles: 20 mm.



# Forged



POLISH  
PRODUCT



black mat



ANGULAR  
JOINT

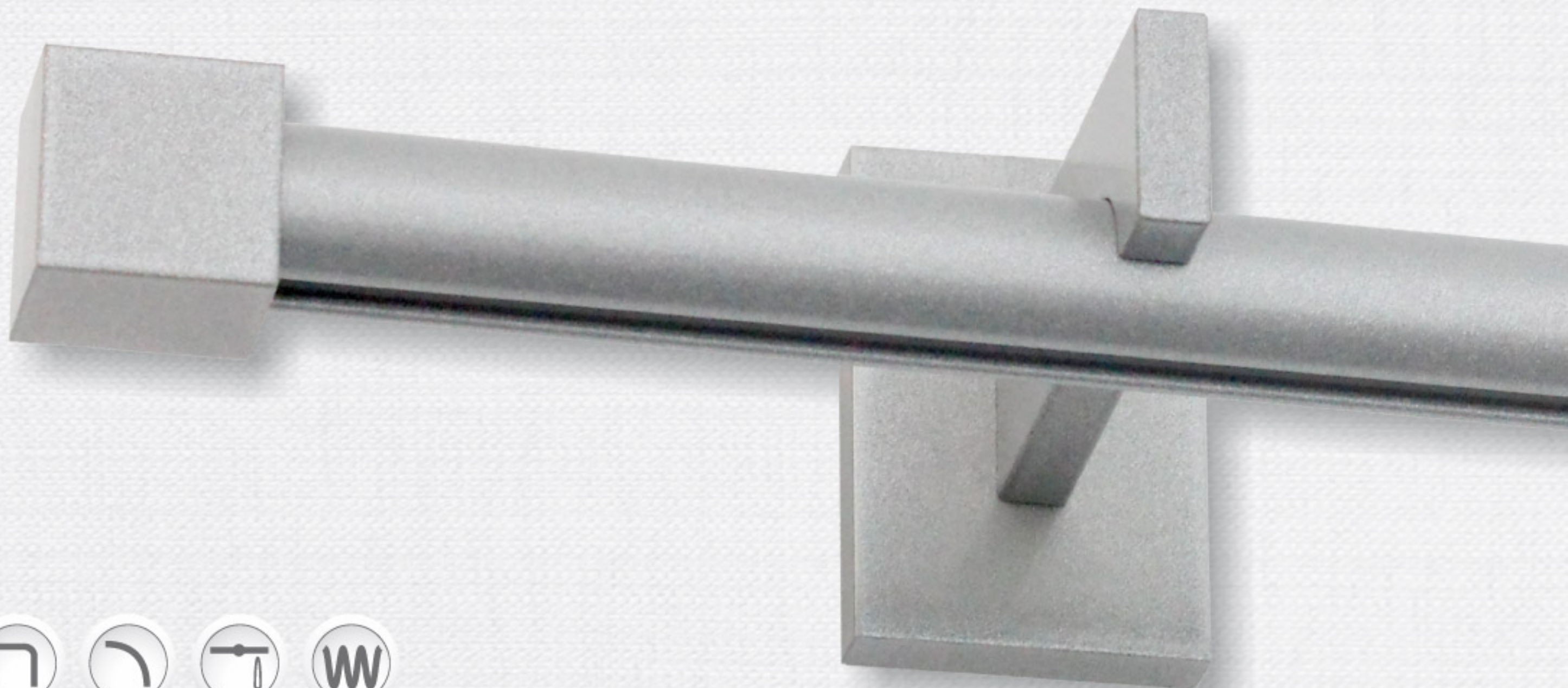
Forged curtain rods made of steel. 12 mm rod is twisted and painted in **black mat**. Brackets and some finals are decorated with brass elements that can be painted in **black**.



# PRIMO

---

aluminum



Curtain rods collection with modern, simple design. Made of aluminum and painted in **inox metallic**, **white** and **black**. Used profile  $\varnothing$  20 mm lets to move the fabrics on the entire length of rod. We can use Wave system to lay the fabrics. There can be single or double curtain rods, mounted to the wall.



ORNAMENTED FINIALS FOR CURTAIN RODS

# *Swarovski Elements*

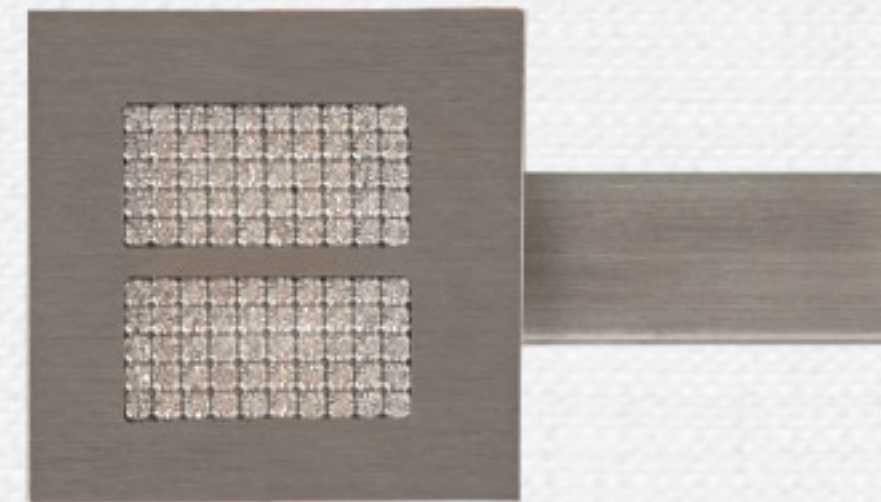
In our offer we have finials, brackets and rosettes made of brass and stainless steel, ornamented with SWAROVSKI ELEMENTS.



Trapezoid finial



Put on rectangle finial



Put on square finial

Half-ball finial



Ball finial



Radiator finial



Rectangle finial





**25 years**  
of experience



***www.KARNISZ.pl***



*The ZEGAR Company is a manufacturer of stainless steel and brass curtain rods, as well as aluminium curtain rail systems. The curtain rods and rails are manufactured in Poland. The design includes the following lines: Classic (classic curtain rods with an antique look), ART DECO (simple and classic), TECHNO and QUADRO (simple and modern), MODERN (simple, modern profiles combined with stainless steel), FORGED. There is a variety of brackets and finals in each collection. Curtain rods and rails manufactured by us has won prizes and awards at fairs, numerous times.*

*The ZEGAR Company has Lloyd's Register ISO quality assurance certificate, that concerns manufacturing mechanical parts and assemblies for the aviation sector and precision mechanics.*

---

*ZEGAR, ul. Prostopadła 13b, 33-100 Tarnów, phone +48 14 621 58 13, fax +48 14 621 07 07; [biuro@karnisz.pl](mailto:biuro@karnisz.pl)  
A branch in Warsaw: "Centrum Karniszy", ul. Połczyńska 93, 01-301 Warszawa; [ck@karnisz.pl](mailto:ck@karnisz.pl)*